



# Imagine Edgenuity

**2024–2025 Kentucky  
Course List**



# Core Curriculum and Electives

## English Language Arts

English Language Arts 6  
English Language Arts 7  
English Language Arts 8  
English Language Arts 9 <sup>H</sup> <sup>EX</sup>  
English Language Arts 10 <sup>H</sup> <sup>EX</sup>  
English Language Arts 11 <sup>H</sup> <sup>EX</sup>  
English Language Arts 12 <sup>H</sup> <sup>EX</sup>  
Literacy & Comprehension I  
Literacy & Comprehension II  
Expository Reading and Writing <sup>EX</sup>  
Introduction to Communications & Speech  
Classic Novels & Author Studies\*\*

## Mathematics

Mathematics 6  
Mathematics 7  
Mathematics 8  
Pre-Algebra  
Algebra I <sup>EX</sup>  
Geometry <sup>EX</sup>  
Algebra II <sup>EX</sup>  
Precalculus <sup>H</sup> <sup>EX</sup>  
Mathematics I <sup>EX</sup>  
Mathematics II <sup>EX</sup>  
Mathematics III <sup>EX</sup>  
Mathematical Models with Applications  
Financial Math  
Trigonometry\* <sup>EX</sup>  
Statistics  
Concepts in Probability and Statistics

## National Test Preparation

ACCUPLACER® +  
ACT WorkKeys® +  
ACT®  
ASVAB® + (Math, Verbal, Science)  
GED® +  
PSAT® +  
SAT®

## Science

Integrated Science 6  
Integrated Science 7  
Integrated Science 8  
Physical Science  
Biology <sup>H</sup> <sup>EX</sup>  
Chemistry <sup>H</sup> <sup>EX</sup>  
Physics <sup>H</sup>  
Environmental Science  
Earth Science  
Earth, Space Science  
Conceptual Progression Science I  
Conceptual Progression Science II  
Conceptual Progression Science III

## Social Studies





Grade 6 Development of Civilizations  
Grade 7 Growth and Expansion of Civilization  
Grade 8 The United States: 1600-1877  
Middle School Survey of World History  
Middle School Modern World History  
World History <sup>EX</sup>  
United States History <sup>H</sup> <sup>EX</sup>  
Civics\*  
Survey of World History <sup>H</sup>  
Economics\*  
Geography (semester)\*  
Geography (full year)  
Civics and Citizenship\*



# Core Curriculum and Electives

## World Languages

### MIDDLE SCHOOL HIGH SCHOOL

Spanish 1	Spanish I 
Spanish 2	Spanish II 
French 1	Spanish III
French 2	French I 
Chinese 1	French II 
Chinese 2	French III
German 1	Chinese I
German 2	Chinese II
Latin 1	German I
Latin 2	German II
	Latin I
	Latin II

## Advanced Placement

All AP courses except Computer Science Principles, English Literature and Composition, Environmental Science, French, Human Geography, Psychology, and Spanish require the purchase of textbooks. Textbooks are not included and can be ordered from online booksellers.

Biology<sup>†</sup>  
Calculus AB  
Computer Science Principles  
English Language & Composition  
English Literature & Composition  
Environmental Science<sup>†</sup>  
Human Geography  
Psychology  
Statistics  
U.S. Government & Politics\*  
U.S. History  
World History: Modern

## General Electives

### MIDDLE SCHOOL

Digital Literacy\*  
Health Quest\*  
Keyboarding and Applications\*  
Middle School Computer Science  
Online Learning and Digital Citizenship\*

### HIGH SCHOOL

Art History I  
Computer Applications – Office 2019/Office 365  
Foundations of Personal Wellness  
Health Education  
Introduction to Art  
Introduction to Computer Science  
Lifetime Fitness (semester)\*  
Lifetime Fitness (full-year)  
Personal Finance\*  
Strategies for Academic Success\*

## Social Emotional Learning

Imagine Purpose 6–12 runs on the Imagine Edgenuity LMS and are available at an additional cost. ImaginePurpose K–5 is also available on a separate platform.



Character & Leadership Development\*  
Climate & Culture Transformation\*  
College & Career Readiness\*  
Mental Health & Wellness\*  
Personal Development\*  
Restorative Practices and Principles\*  
Social & Emotional Success\*  
Unlock Your Purpose\*  
Trauma-Informed Living\*



# Exceptional Students Courses

These courses, designed for high school students who are three or more grade levels behind, are priced separately by enrollment.

## MATH

- Basic Math I
- Basic Math II
- Basic Algebra
- Basic Geometry

## ENGLISH LANGUAGE ARTS

- Reading and Writing I
- Reading and Writing II
- Reading and Writing III
- Reading and Writing IV

## SOCIAL STUDIES

- U.S. History Essentials
- World History Essentials
- U.S. Government Essentials
- Economics and Personal Finance Essentials

## SCIENCE

- Life Science Essentials
- Physical Science Essentials

# Career and Technical Education

CTE Electives can be added to concurrent or site licenses for an additional cost.

## Career Readiness

- Career Explorations I\*
- Career Explorations II\*
- Career Explorations III\*
- Career Explorations
- Career Management\*
- Career Planning and Development

## Career Clusters

### AGRICULTURE EDUCATION

- Agribusiness Systems\*
- Animal Systems\*
- Food Products and Processing Systems\*
- Introduction to Agriculture, Food, and Natural Resources\*
- Plant Systems\*
- Power, Structural, and Technical Systems\*

### BUSINESS AND MARKETING EDUCATION

- Banking Services Careers\*
- Business Computer Information Systems
- Business English
- Business Information Management
- Business Law\*
- Careers in Marketing Research\*
- Introduction to Business
- Introduction to Careers in Finance\*
- Keyboarding and Applications\*

- Small Business Entrepreneurship
- Technology and Business

### CONSTRUCTION TECHNOLOGY

- Construction Careers\*
- Introduction to Careers in Architecture & Construction\*

### CTE ELECTIVES

- Introduction to Careers in Government and Public Administration\*

### EDUCATION & TRAINING

- Introduction to Careers in Education & Training\*
- Introduction to Human Growth and Development\*
- Teaching and Training Careers\*

### ENGINEERING AND TECHNOLOGY EDUCATION

- Engineering and Design\*
- Engineering and Product Development\*
- Introduction to STEM\*
- Science and Mathematics in the Real World\*
- Scientific Discovery and Development\*
- Scientific Research\*
- STEM and Problem Solving\*



# Career and Technical Education

CTE Electives can be added to concurrent or site licenses for an additional cost.

## Career Clusters (continued)

### FAMILY AND CONSUMER SCIENCES EDUCATION

- Family and Community Services\*
- Food Safety and Sanitation\*
- Introduction to Consumer Services\*
- Introduction to Human Services\*
- Marketing and Sales for Tourism and Hospitality\*
- Personal Care Services\*
- Planning Meetings and Special Events\*
- Sustainable Service Management for Hospitality & Tourism\*
- Transportation and Tours for the Traveler\*

### HEALTH SCIENCE

- Careers in Allied Health\*
- Health, Safety and Ethics in the Health Environment\*
- Health Science Concepts
- Introduction to Careers in the Health Sciences\*
- Introduction to Health Science
- Medical Terminology
- Nursing: Unlimited Possibilities & Unlimited Potential\*\*
- Nursing Assistant†
- Pharmacy Technician†
- Physicians, Pharmacists, Dentists, Veterinarians & Other Doctors\*
- Public Health: Discovering the Big Picture in Health Care\*
- Therapeutics: The Art of Restoring and Maintaining Wellness\*

### INFORMATION TECHNOLOGY

- Computer Science Principles
- Fundamentals of Computer Systems\*
- Fundamentals of Programming & Software Development\*
- Introduction to Computer Science
- Introduction to Information Technology
- Introduction to Information Technology Support & Services\*
- Introduction to Network Systems\*
- Network System Design\*
- New Applications: Web Development in the 21st Century\*
- Software Development Tools\*

### LAW AND PUBLIC SAFETY

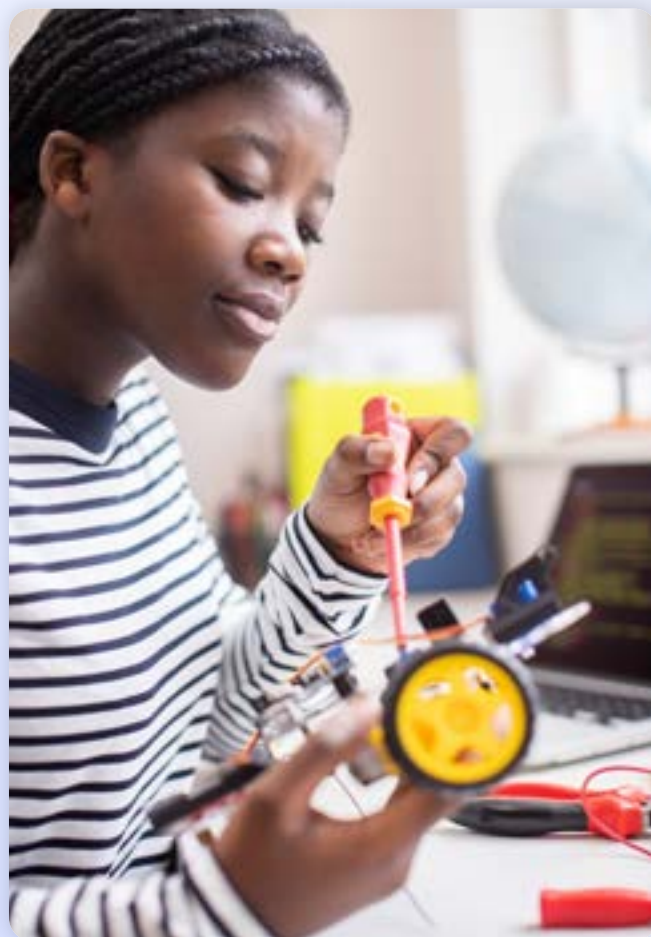
- Corrections: Policies and Procedures\*
- Fire & Emergency Services\*
- Forensics: Using Science to Solve a Mystery\*
- Introduction to Law, Public Safety, Corrections, & Security\*
- Law Enforcement Field Services\*
- Legal Services\*
- Security and Protective Services\*

### MEDIA ARTS

- Fundamentals of Digital Media\*
- Intro to Careers in Arts, A/V Tech, and Communications

### TRANSPORTATION EDUCATION

- Careers in Logistics Planning and Management Services\*
- Introduction to Careers in Transportation, Distribution, and Logistics\*



# Subscription-based Electives

These electives are priced separately by enrollment.

## Career and Elective Courses by eDynamic Learning

Imagine Edgenuity offers a suite of eDynamic Learning electives on a subscription basis, allowing students to pursue a large range of interests in language arts, creative arts, STEM, and CTE. These electives are priced separately by enrollment.

### MIDDLE SCHOOL ELECTIVES

Middle School 2D Studio Art 1A\*  
Middle School 2D Studio Art 1B\*  
Middle School Coding 1A\* †  
Middle School Coding 1B\* †  
Middle School Digital Art & Design 1A\*  
Middle School Digital Art & Design 1B\*  
Middle School Exploring Music 1A\*  
Middle School Exploring Music 1B\*  
Middle School Game Design 1A\* †  
Middle School Game Design 1B\* †  
Middle School Journalism 1A\*  
Middle School Journalism 1B\*  
Middle School Photography 1A\*  
Middle School Photography 1B\*  
MS Robotics 1A **new**  
MS Robotics 1B **new**

### HIGH SCHOOL ELECTIVES

African-American History\*  
American Sign Language 1A\*  
American Sign Language 1B\*  
American Sign Language 2A\*  
American Sign Language 2B\*  
American Sign Language 3A\*  
American Sign Language 3B\*  
Anthropology 1\*  
Anthropology 2\*  
Archaeology\*  
Black American History 1A **new**  
Creative Writing\*  
Creative Writing: Unleashing the Core of Your Imagination **new**  
Gothic Literature\*  
History of the Holocaust\*  
Lord of the Rings: An Exploration of the Films and Their Literary Influences\*†  
Mythology & Folklore\*  
Personal Psychology 1\*  
Personal Psychology 2\*  
Philosophy\*  
Social Problems 1\*  
Social Problems 2\*  
Sociology 1\*  
Sociology 2\*  
Theater, Cinema, Film Production 1A\*†  
Theater, Cinema, Film Production 1B\*†  
Women's Studies: A Personal Journey Through Film **new**  
World Religions\*

### AGRICULTURE, FOOD, AND NATURAL RESOURCES

Agriscience 1A\*  
Agriscience 2A\*  
Agriscience 2B\*  
Biotechnology 1A\*  
Biotechnology 1B\*  
Forestry & Natural Resources\*  
Principles of Agriculture, Food, and Natural Resources\*  
Veterinary Science\*

### ARTS, AUDIO/VIDEO TECHNOLOGY, AND COMMUNICATIONS

3D Modeling 1A\*  
3D Modeling 1B\*  
Animation 1A\*  
Animation 1B\*  
Digital Photography 1A\*  
Digital Photography 1B\*  
Digital Photography 2A\*  
Journalism 1A\*  
Journalism 1B\*  
Music Appreciation\*  
Public Speaking 1A\*  
Public Speaking 1B\*  
Social Media\*

### BUSINESS, MANAGEMENT, & ADMINISTRATION

Business Information Management 1A **new**  
Business Information Management 1B **new**  
Business Law 1A **new**  
Business Law 1B **new**  
Human Resource Management 1A\*  
Human Resource Management 1B\*  
International Business\*  
Legal Admin Specialist 1A\*  
Legal Admin Specialist 1B\*  
Management 1A\*  
Management 1B\*  
Medical Office Administration 1A\*  
Medical Office Administration 1B\*  
Office Administration 1A\*  
Office Administration 1B\*  
Principles of Business, Marketing, Finance 1A\* **new**  
Principles of Business, Marketing, Finance 1B\* **new**

### EDUCATION & TRAINING

Early Childhood Education 1A\*  
Early Childhood Education 1B\*  
Real World Parenting\*

### ENERGY

Renewable Technologies 1A\*  
Renewable Technologies 1B\*

### HEALTH

Allied Health Assistant 1A\*  
Allied Health Assistant 1B\*  
Anatomy and Physiology 1A **new**  
Anatomy and Physiology 1B **new**  
Biotechnician 1A\* †  
Biotechnician 1B\* †  
Biotechnician 2A\* †  
Biotechnician 2B\* †  
Dental Assistant 1A\* †  
Dental Assistant 1B\* †  
Dental Assistant 2A\* †  
Dental Assistant 2B\* †  
EKG Technician 1A\*  
EKG Technician 1B\*  
Emergency Medical Responder 1A\* †  
Emergency Medical Responder 1B\* †  
Medical Assistant 1A\*  
Medical Assistant 1B\*  
Medical Diagnostic Technology 1B\* †  
Medical Lab Assisting 1A\* †  
Medical Lab Assisting 1B\* †  
Medical Lab Assisting 2A **new**  
Sports Medicine 1A\*  
Sports Medicine 1B\*  
Sports Medicine 2A\*  
Sports Medicine 2B\*

### HOSPITALITY & TOURISM

Culinary Arts 1A\*  
Culinary Arts 1B\*  
Culinary Arts 2\*  
Hospitality & Tourism 1\*  
Hospitality & Tourism 2A\*  
Hospitality & Tourism 2B\*  
Hotel Management 1A\*  
Hotel Management 1B\*  
Restaurant Management\*





## HUMAN SERVICES

Cosmetology 1<sup>†\*</sup>  
Cosmetology 2<sup>†\*</sup>  
Cosmetology 3A\*  
Cosmetology 3B\*  
Fashion Design\*  
Interior Design\*  
Nutrition & Wellness\*  
Peer Counseling\*

## INFORMATION TECHNOLOGY

Advanced Networking 1A\*  
Advanced Networking 1B\*  
Computer Maintenance 1A\*  
Computer Maintenance 1B\*  
Cybersecurity 1A\*  
Cybersecurity 1B\*  
Digital Media Web Design 2A\*  
Digital Media Web Design 2B\*  
Foundations of Game Design 1A\* <sup>†</sup>  
Foundations of Game Design 1B\* <sup>†</sup>  
Game Design 2A\* <sup>†</sup>  
Game Design 2B\* <sup>†</sup>  
Network Security Fundamentals 1A\*  
Network Security Fundamentals 1B\*  
Operational Cybersecurity 1A\*

Operational Cybersecurity 1B\*  
Principles of Information  
Technology 1A **new**  
Principles of Information  
Technology 1B **new**  
Web Development 2A\*  
Web Development 2B\*

## LAW, PUBLIC SAFETY, CORRECTIONS, AND SECURITY

Careers in Criminal Justice 1A\*  
Careers in Criminal Justice 1B\*  
Criminology\*  
Military Careers\*  
Law & Order\*  
National Security\*  
Principles of Public Service\*

## MANUFACTURING

Manufacturing: Product Design and  
Innovation\*  
Manufacturing 1A **new**

## MARKETING

Advertising and Sales Promotion\*  
Marketing 2A\*  
Marketing 2B\*

Marketing Foundations 1A\*  
Marketing Foundations 1B\*  
Professional Sales and Promotion 1A\*  
Professional Sales and Promotion 1B\*  
Sports & Entertainment Marketing\*

## SCIENCE, TECHNOLOGY, ENGINEERING, AND MATHEMATICS

Applied Engineering 1A\*  
Applied Engineering 1B\*  
Astronomy 1A\*  
Astronomy 1B\*  
Concepts of Engineering & Technology\*  
Forensics 1A: Introduction **new**  
Forensics 1B: The Science of Crime **new**  
Forensics Science 1\*  
Forensics Science 2\*  
Great Minds in Science\*  
Marine Science 1A\*  
Marine Science 1B\*  
Robotics 1A **new**  
Robotics 1B **new**  
Robotics 2A **new**  
Robotics 2B **new**

# Subscription-based Electives

These electives are priced separately by enrollment.

## Instructional Services Electives Offered with Imagine Edgenuity Teachers Only

All electives can be taught through a district teacher or a highly qualified Imagine Edgenuity instructor. However, the following electives are offered only through Imagine Edgenuity's Instructional Services to help schools further expand their course offerings with Imagine Edgenuity's instructors.

Adaptive PE\*  
Advanced PE 1 & 2  
Anatomy\*  
Comprehensive PE\*  
Concepts in Fitness\*  
Credit Recovery PE 1 & 2  
Drugs & Alcohol\*  
Exercise Science\*  
Family & Consumer Sciences\*  
Family Living & Healthy Relationships\*  
First Aid & Safety\*

Fitness Fundamentals 1 & 2  
Flexibility Training\*  
Group Sports\*  
Health & Personal Wellness\*  
Health Careers\*  
HOPE 1 & 2  
Individual Sports\*  
Intro to Coaching\*  
Life Skills\*  
Middle School Fitness Basics 1 & 2  
Middle School Intro to Group Sports 1 & 2

Middle School Health\*  
Middle School Intro to Individual Sports 1 & 2  
Middle School Life Skills\*  
Personal Health and Fitness\*  
Personal Training\*  
Personal Training Concepts\*  
Physiology\*  
Running\*  
Sports Officiating\*  
Strength Training\*  
Walking Fitness\*

\* One-semester course

\*\* Supplemental modules (can be used alongside other courses)

<sup>†</sup> These courses are not available via Instructional Services. Other courses are subject to teacher availability.

<sup>H</sup> Also available for honors

**EX** Courses marked with **EX** will be available in EdgeEX for Back to School 2024. Visit the Imagine Edgenuity online catalog to view EdgeEX courses available now.

### Notes

AP<sup>®</sup>, Advanced Placement<sup>®</sup>, SAT<sup>®</sup>, PSAT<sup>®</sup>, and ACCUPLACER<sup>®</sup> are registered trademarks of the College Board.

ACT<sup>®</sup> and ACT WorkKeys<sup>®</sup> are registered trademarks of ACT, Inc.

ASVAB<sup>®</sup> (Armed Services Vocational Aptitude Battery) is a registered trademark of the United States Military Entrance Processing Command.

GED<sup>®</sup> is a registered trademark of the American Council on Education.





imagine  
edgenuity®



imagine  
learning

[imaginelearning.com/imagine-edgenuity](https://imaginelearning.com/imagine-edgenuity)  
877-725-4257 • [solutions@imaginelearning.com](mailto:solutions@imaginelearning.com)