



# Imagine Edgenuity

**2024 Missouri  
Course List**



# Core Curriculum and Electives

## English Language Arts

English Language Arts 6 <sup>M</sup>  
English Language Arts 7 <sup>M</sup>  
English Language Arts 8 <sup>M</sup>  
English Language Arts 9 <sup>M</sup>  
English Language Arts 10 <sup>M</sup>  
English Language Arts 11 <sup>M</sup>  
English Language Arts 12 <sup>M</sup> **EX**  
Literacy & Comprehension I <sup>M</sup>  
Literacy & Comprehension II <sup>M</sup>  
Introduction to Communications and Speech <sup>M</sup>  
Expository Reading and Writing <sup>M</sup> **EX**  
Classic Novels & Author Studies\*\*

## Science

Science 6 <sup>M</sup>  
Science 7 <sup>M</sup>  
Science 8 <sup>M</sup>  
Biology <sup>M</sup>  
Chemistry <sup>M</sup>  
Earth and Space Science <sup>M</sup>  
Physics <sup>M</sup>  
Physical Science <sup>M</sup>  
Environmental Science <sup>M</sup>

## Social Studies

Grade 6 World History <sup>M</sup>  
Grade 7 World Geography <sup>M</sup>  
Grade 8 U.S. History <sup>M</sup>  
U.S. History II <sup>M</sup>  
Survey of U.S. History <sup>M</sup>  
World History II <sup>M</sup>  
Modern World History <sup>M</sup>  
U.S. Government\* <sup>M</sup>  
Economics\* <sup>M</sup>  
Human Geography  
Civics and Citizenship\*

## Mathematics

Mathematics 6 <sup>M</sup>  
Mathematics 7 <sup>M</sup>  
Mathematics 8 <sup>M</sup>  
Pre-Algebra <sup>M</sup>  
Algebra I <sup>H M</sup> **EX**  
Geometry <sup>H M</sup> **EX**  
Algebra II <sup>H M</sup> **EX**  
Mathematics I <sup>M</sup> **EX**  
Mathematics II <sup>M</sup> **EX**  
Mathematics III <sup>M</sup> **EX**  
Precalculus <sup>H M</sup> **EX**  
Mathematical Models with Applications <sup>M</sup>  
Financial Math <sup>M</sup>  
Trigonometry\* <sup>M</sup>  
Concepts in Probability and Statistics <sup>M</sup>  
Statistics <sup>M</sup>

## National Test Preparation

ACCUPLACER® <sup>+</sup> <sup>M</sup>  
ACT WorkKeys® <sup>+</sup> <sup>M</sup>  
ACT® <sup>+</sup> <sup>M</sup>  
ASVAB® <sup>+</sup> (Math, Verbal, Science) <sup>M</sup>  
GED® <sup>+</sup> <sup>M</sup>  
HiSET® <sup>+</sup> <sup>M</sup>  
PSAT® <sup>+</sup> <sup>M</sup>  
SAT® <sup>+</sup> <sup>M</sup>

## Missouri Test Preparation

EOC ELA 9 <sup>+</sup> <sup>M</sup>  
EOC ELA 10 <sup>+</sup> <sup>M</sup>  
EOC Algebra I <sup>+</sup> <sup>M</sup>  
EOC Algebra II <sup>+</sup> <sup>M</sup>  
EOC Geometry <sup>+</sup> <sup>M</sup>  
MAP Grade 8 Science <sup>+</sup> <sup>M</sup>  
EOC Biology <sup>+</sup> <sup>M</sup>  
EOC Physical Science <sup>+</sup> <sup>M</sup>  
EOC American History <sup>+</sup> <sup>M</sup>  
EOC Government <sup>+</sup> <sup>M</sup>



# Core Curriculum and Electives

## World Languages

### MIDDLE SCHOOL HIGH SCHOOL

Spanish 1 <sup>M</sup>	Spanish I <sup>M</sup>
Spanish 2 <sup>M</sup>	Spanish II <sup>M</sup>
French 1 <sup>M</sup>	Spanish III <sup>M</sup>
French 2 <sup>M</sup>	French I <sup>M</sup>
Chinese 1 <sup>M</sup>	French II <sup>M</sup>
Chinese 2 <sup>M</sup>	French III <sup>M</sup>
German 1 <sup>M</sup>	Chinese I <sup>M</sup>
German 2 <sup>M</sup>	Chinese II <sup>M</sup>
Latin 1 <sup>M</sup>	German I <sup>M</sup>
Latin 2 <sup>M</sup>	German II <sup>M</sup>
	Latin I <sup>M</sup>
	Latin II <sup>M</sup>

## Advanced Placement

All AP courses except Computer Science Principles, English Literature and Composition, Environmental Science, French, Human Geography, Psychology, and Spanish require the purchase of textbooks. Textbooks are not included and can be ordered from online booksellers.

- Biology<sup>† M</sup>
- Calculus AB<sup>M</sup>
- Computer Science Principles<sup>† M</sup>
- English Language & Composition<sup>M</sup>
- English Literature & Composition<sup>M</sup>
- Environmental Science<sup>M†</sup>
- French Language & Culture<sup>M</sup>
- Human Geography<sup>M</sup>
- Psychology<sup>M</sup>
- Spanish Language & Culture<sup>M</sup>
- Statistics<sup>M</sup>
- U.S. Government & Politics<sup>\* M</sup>
- U.S. History<sup>M</sup>
- World History: Modern<sup>M</sup>

## General Electives

### MIDDLE SCHOOL

- Digital Literacy<sup>\*</sup>
- Health Quest<sup>\*</sup>
- Keyboarding and Applications<sup>\* M</sup>
- Middle School Computer Science
- Online Learning and Digital Citizenship<sup>M</sup>

### HIGH SCHOOL

- Art History I<sup>M</sup>
- Computer Applications – Office 2019/Office 365<sup>M</sup>
- Computer Science Principles<sup>M</sup>
- Contemporary Health (semester)<sup>\* M</sup>
- Contemporary Health (full-year)
- Foundations of Personal Wellness<sup>M</sup>
- Healthy Living (semester)<sup>\* M</sup>
- Healthy Living (full-year)
- Introduction to Art<sup>M</sup>
- Introduction to Computer Science<sup>M</sup>
- Lifetime Fitness (semester)<sup>\* M</sup>
- Lifetime Fitness (full-year)
- Personal Finance<sup>\* M</sup>
- Strategies for Academic Success<sup>\* M</sup>

## Social Emotional Learning

Imagine Purpose 6–12 runs on the Imagine Edgenuity LMS and are available at an additional cost. ImaginePurpose K–5 is also available on a separate platform.



- Character & Leadership Development<sup>\* M</sup>
- Climate & Culture Transformation<sup>\* M</sup>
- College & Career Readiness<sup>\* M</sup>
- Mental Health & Wellness<sup>\* M</sup>
- Personal Development<sup>\* M</sup>
- Restorative Practices and Principles<sup>\* M</sup>
- Social & Emotional Success<sup>\* M</sup>
- Unlock Your Purpose<sup>\* M</sup>
- Trauma-Informed Living<sup>\* M</sup>



# Exceptional Students Courses

These courses, designed for high school students who are three or more grade levels behind, are priced separately by enrollment.

## MATH

- Basic Math I
- Basic Math II
- Basic Algebra
- Basic Geometry

## ENGLISH LANGUAGE ARTS

- Reading and Writing I
- Reading and Writing II
- Reading and Writing III
- Reading and Writing IV

## SOCIAL STUDIES

- U.S. History Essentials
- World History Essentials
- U.S. Government Essentials
- Economics and Personal Finance Essentials

## SCIENCE

- Life Science Essentials
- Physical Science Essentials

# Career and Technical Education

CTE Electives can be added to concurrent or site licenses for an additional cost.

## Career Readiness

- Career Explorations I\*<sup>M</sup>
- Career Explorations II\*<sup>M</sup>
- Career Explorations III\*<sup>M</sup>
- Career Explorations<sup>M</sup>
- Career Management\*<sup>M</sup>
- Career Planning and Development\*<sup>M</sup>

## Career Clusters

### AGRICULTURE, FOOD & NATURAL RESOURCES

- Agribusiness Systems\*<sup>M+</sup>
- Animal Systems\*<sup>M+</sup>
- Food Products and Processing Systems\*<sup>M+</sup>
- Introduction to Agriculture, Food, & Natural Resources\*<sup>M+</sup>
- Plant Systems<sup>M+</sup>
- Power, Structural, and Technical Systems\*<sup>M+</sup>

### ARCHITECTURE & CONSTRUCTION

- Construction Careers\*<sup>M+</sup>
- Introduction to Careers in Architecture & Construction\*<sup>M+</sup>

### ARTS, A/V TECHNOLOGY & COMMUNICATIONS

- Fundamentals of Digital Media\*<sup>M+</sup>
- Intro to Careers in Arts, A/V Tech, and Communications

### BUSINESS MANAGEMENT & ADMINISTRATION

- Business Computer Information Systems<sup>M</sup>
- Business English
- Business Information Management

- Business Law\*<sup>M</sup>

- Introduction to Business<sup>M</sup>
- Keyboarding and Applications\*<sup>M</sup>
- Small Business Entrepreneurship<sup>M</sup>
- Technology and Business

### EDUCATION & TRAINING

- Introduction to Careers in Education & Training\*<sup>M</sup>
- Introduction to Human Growth and Development\*<sup>M</sup>
- Teaching and Training Careers\*<sup>M+</sup>

### FINANCE

- Banking Services Careers\*<sup>M+</sup>
- Introduction to Careers in Finance\*<sup>M</sup>

### GOVERNMENT & PUBLIC ADMINISTRATION

- Introduction to Careers in Government & Public Administration\*<sup>M</sup>

### HEALTH SCIENCE

- Careers in Allied Health\*<sup>M+</sup>
- Health, Safety and Ethics in the Health Environment\*<sup>M+</sup>
- Health Science Concepts<sup>M+</sup>
- Introduction to Careers in the Health Sciences\*<sup>M</sup>
- Introduction to Health Science
- Medical Terminology<sup>M+</sup>
- Nursing: Unlimited Possibilities & Unlimited Potential\*<sup>M+</sup>
- Nursing Assistant<sup>+</sup><sup>M</sup>
- Pharmacy Technician<sup>+</sup><sup>M</sup>
- Physicians, Pharmacists, Dentists, Veterinarians and Other Doctors\*<sup>M+</sup>



# Career and Technical Education

CTE Electives can be added to concurrent or site licenses for an additional cost.

## Career Clusters (continued)

### HEALTH SCIENCE

- Public Health: Discovering the Big Picture in Health Care\*<sup>M</sup>
- Therapeutics: The Art of Restoring and Maintaining Wellness\*<sup>M+</sup>

### HOSPITALITY & TOURISM

- Food Safety and Sanitation\*<sup>M</sup>
- Marketing and Sales for Tourism and Hospitality\*<sup>M+</sup>
- Planning Meetings and Special Events\*<sup>M</sup>
- Sustainable Service Management for Hospitality & Tourism\*<sup>M</sup>
- Transportation and Tours for the Traveler\*<sup>M+</sup>

### HUMAN SERVICES

- Introduction to Consumer Services\*<sup>M</sup>
- Introduction to Human Services\*<sup>M</sup>
- Personal Care Services\*<sup>M</sup>
- Family and Community Services\*<sup>M</sup>

### INFORMATION TECHNOLOGY

- Computer Science Principles<sup>M</sup>
- Fundamentals of Computer Systems\*<sup>M+</sup>
- Fundamentals of Programming & Software Development\*<sup>M+</sup>
- Introduction to Computer Science<sup>M</sup>
- Introduction to Information Technology<sup>M</sup>
- Introduction to Information Technology Support & Services\*<sup>M</sup>
- Introduction to Network Systems\*<sup>M</sup>
- Network System Design\*<sup>M</sup>
- New Applications: Web Development in the 21st Century\*<sup>M+</sup>
- Software Development Tools\*<sup>M</sup>

### LAW, PUBLIC SAFETY, CORRECTIONS & SECURITY

- Corrections: Policies and Procedures\*<sup>M+</sup>
- Fire & Emergency Services\*<sup>M+</sup>
- Forensics: Using Science to Solve a Mystery\*<sup>M</sup>
- Introduction to Law, Public Safety, Corrections, & Security\*<sup>M+</sup>
- Law Enforcement Field Services\*<sup>M+</sup>
- Legal Services\*<sup>M+</sup>
- Security and Protective Services\*<sup>M+</sup>

### MARKETING

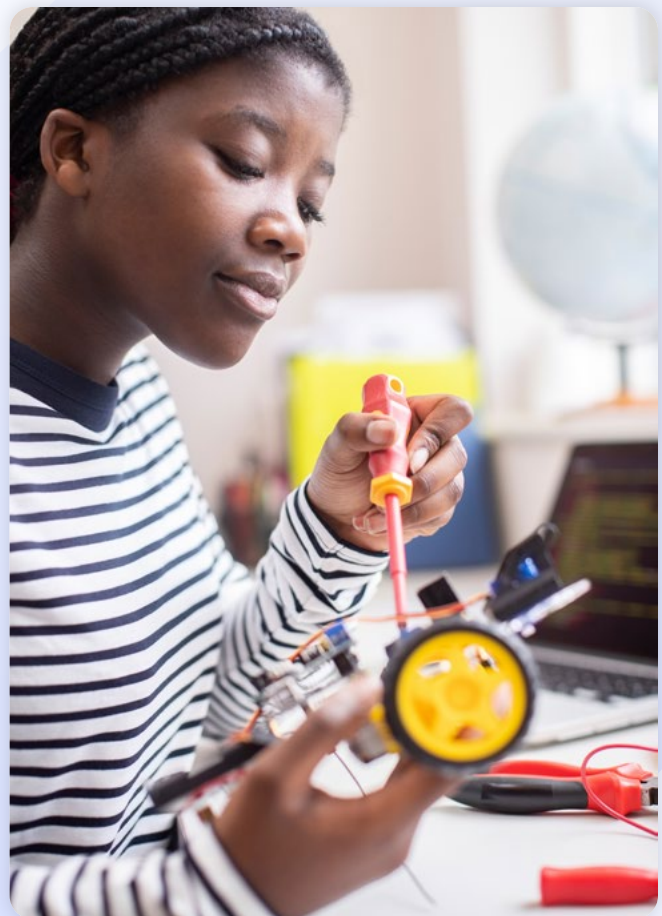
- Careers in Marketing Research\*<sup>M+</sup>

### SCIENCE, TECHNOLOGY, ENGINEERING & MATHEMATICS

- Engineering and Design\*<sup>M+</sup>
- Engineering and Product Development\*<sup>M+</sup>
- Introduction to STEM\*<sup>M+</sup>
- Science and Mathematics in the Real World\*<sup>M+</sup>
- Scientific Discovery and Development\*<sup>M</sup>
- Scientific Research\*<sup>M</sup>
- STEM and Problem Solving\*<sup>M+</sup>

### TRANSPORTATION, DISTRIBUTION & LOGISTICS

- Careers in Logistics Planning and Management Services\*<sup>M+</sup>
- Introduction to Careers in Transportation, Distribution, & Logistics\*<sup>M+</sup>



# Subscription-based Electives

These electives are priced separately by enrollment.

## Career and Elective Courses by eDynamic Learning

Imagine Edgenuity offers a suite of eDynamic Learning electives on a subscription basis, allowing students to pursue a large range of interests in language arts, creative arts, STEM, and CTE. These electives are priced separately by enrollment.

### MIDDLE SCHOOL ELECTIVES

Middle School 2D Studio Art 1A\*<sup>M</sup>  
Middle School 2D Studio Art 1B\*<sup>M</sup>  
Middle School Coding 1A\*<sup>M+</sup>  
Middle School Coding 1B\*<sup>M+</sup>  
Middle School Digital Art & Design 1A\*<sup>M</sup>  
Middle School Digital Art & Design 1B\*<sup>M</sup>  
Middle School Exploring Music 1A\*<sup>M</sup>  
Middle School Exploring Music 1B\*<sup>M</sup>  
Middle School Game Design 1A\*<sup>M+</sup>  
Middle School Game Design 1B\*<sup>M+</sup>  
Middle School Journalism 1A\*<sup>M</sup>  
Middle School Journalism 1B\*<sup>M</sup>  
Middle School Photography 1A\*<sup>M</sup>  
Middle School Photography 1B\*<sup>M</sup>

### HIGH SCHOOL ELECTIVES

African-American History\*<sup>M</sup>  
American Sign Language 1A\*<sup>M+</sup>  
American Sign Language 1B\*<sup>M+</sup>  
American Sign Language 2A\*<sup>M+</sup>  
American Sign Language 2B\*<sup>M+</sup>  
American Sign Language 3A\*<sup>+</sup>  
American Sign Language 3B\*<sup>+</sup>  
Anthropology 1\*<sup>M</sup>  
Anthropology 2\*<sup>M</sup>  
Archaeology\*<sup>M</sup>  
Creative Writing\*<sup>M</sup>  
Gothic Literature\*<sup>M</sup>  
History of the Holocaust\*<sup>M</sup>  
Lord of the Rings: An Exploration of the Films and Their Literary Influences\*<sup>+</sup>  
Mythology & Folklore\*<sup>M</sup>  
Personal Psychology 1\*<sup>M</sup> **new**  
Personal Psychology 2\*<sup>M</sup> **new**  
Philosophy\*<sup>M</sup>  
Social Problems 1\*<sup>M</sup>  
Social Problems 2\*<sup>M</sup>  
Sociology 1\*<sup>M</sup> **new**  
Sociology 2\*<sup>M</sup> **new**  
Theater, Cinema, Film Production 1A\*<sup>+</sup>  
Theater, Cinema, Film Production 1B\*<sup>+</sup>  
Women's Studies: A Personal Journey Through Film\*<sup>+</sup>  
World Religions\*<sup>M</sup>

### AGRICULTURE, FOOD, AND NATURAL RESOURCES

Agriscience 1A\*<sup>M+</sup>  
Agriscience 2A\*<sup>M+</sup>  
Agriscience 2B\*  
Biotechnology 1A\*<sup>M</sup> **new**  
Biotechnology 1B\*<sup>M</sup> **new**  
Forestry & Natural Resources\*<sup>M+</sup>  
Principles of Agriculture, Food, and Natural Resources\*<sup>M+</sup>  
Veterinary Science\*<sup>M+</sup>

### ARTS, AUDIO/VIDEO TECHNOLOGY, AND COMMUNICATIONS

3D Modeling 1A\*<sup>M+</sup> **new**  
3D Modeling 1B\*<sup>+</sup> **new**  
Animation 1A\*<sup>M+</sup>  
Animation 1B\*<sup>+</sup>  
Digital Photography 1A\*<sup>M</sup>  
Digital Photography 1B\*<sup>M</sup>  
Digital Photography 2\*<sup>M</sup>  
Journalism 1A\*<sup>M</sup>  
Journalism 1B\*<sup>M</sup>  
Music Appreciation\*<sup>M</sup>  
Public Speaking 1A\*<sup>M</sup>  
Public Speaking 1B\*<sup>M</sup>  
Social Media\*<sup>M</sup>

### BUSINESS, MANAGEMENT, & ADMINISTRATION **new**

Human Resource Management 1A\*<sup>M</sup>  
Human Resource Management 1B\*<sup>M</sup>  
International Business\*<sup>M</sup>  
Legal Admin Specialist 1A\*<sup>M</sup>  
Legal Admin Specialist 1B\*<sup>M</sup>  
Management 1A\*<sup>M</sup>  
Management 1B\*<sup>M</sup>  
Medical Office Administration 1A\*<sup>M+</sup>  
Medical Office Administration 1B\*<sup>M+</sup>  
Office Administration 1A\*  
Office Administration 1B\*

### EDUCATION & TRAINING

Early Childhood Education 1A\*<sup>M</sup>  
Early Childhood Education 1B\*<sup>M</sup>  
Real World Parenting\*<sup>M</sup>

### ENERGY

Renewable Technologies 1A\*<sup>M+</sup>  
Renewable Technologies 1B\*<sup>M+</sup>

### HEALTH **new**

Allied Health Assistant 1A\*  
Allied Health Assistant 1B\*  
Biotechnician 1A\*  
Biotechnician 1B\*  
Biotechnician 2A\*  
Biotechnician 2B\*  
Dental Assistant 1A\*  
Dental Assistant 1B\*  
Dental Assistant 2A\*  
Dental Assistant 2B\*  
EKG Technician 1A\*  
EKG Technician 1B\*  
Emergency Medical Responder 1A\*  
Emergency Medical Responder 1B\*  
Medical Assistant 1A\*<sup>M</sup>  
Medical Assistant 1B\*<sup>M</sup>  
Medical Diagnostic Technology 1B\*  
Medical Lab Assisting 1A\*  
Medical Lab Assisting 1B\*  
Sports Medicine 1A\*  
Sports Medicine 1B\*  
Sports Medicine 2A\*  
Sports Medicine 2B\*

### HOSPITALITY & TOURISM

Culinary Arts 1A\*<sup>M</sup>  
Culinary Arts 1B\*<sup>M</sup>  
Culinary Arts 2\*  
Hospitality & Tourism 1\*<sup>M</sup>  
Hospitality & Tourism 2A\*<sup>M</sup>  
Hospitality & Tourism 2B\*<sup>M</sup>  
Hotel Management 1A\*<sup>M</sup> **new**  
Hotel Management 1B\*<sup>M</sup> **new**  
Restaurant Management\*



## HUMAN SERVICES

Cosmetology 1<sup>†\*</sup> <sup>M</sup>  
Cosmetology 2<sup>†\*</sup> <sup>M</sup>  
Cosmetology 3A\*  
Cosmetology 3B\*  
Fashion Design\* <sup>M</sup>  
Interior Design\* <sup>M</sup>  
Nutrition & Wellness\* <sup>M</sup>  
Peer Counseling\* <sup>M</sup>

## INFORMATION TECHNOLOGY

Advanced Networking 1A\* <sup>M</sup> **new**  
Advanced Networking 1B\* <sup>M</sup> **new**  
Computer Maintenance 1A\* <sup>M†</sup> **new**  
Computer Maintenance 1B\* <sup>M†</sup> **new**  
Cybersecurity 1A\* <sup>M</sup>  
Cybersecurity 1B\* <sup>M</sup>  
Digital Media Web Design 2A\* <sup>M</sup> **new**  
Digital Media Web Design 2B\* <sup>M</sup> **new**  
Foundations of Game Design 1A\* <sup>†</sup>  
Foundations of Game Design 1B\* <sup>†</sup>

Game Design 2A\* **new**  
Game Design 2B\* **new**  
Network Security Fundamentals 1A\* **new**  
Network Security Fundamentals 1B\* **new**  
Operational Cybersecurity 1A\* **new**  
Operational Cybersecurity 1B\* **new**  
Web Development 2A\* **new**  
Web Development 2B\* **new**

## LAW, PUBLIC SAFETY, CORRECTIONS, AND SECURITY

Careers in Criminal Justice 1A\* <sup>M</sup>  
Careers in Criminal Justice 1B\* <sup>M</sup>  
Criminology\* <sup>M</sup>  
Introduction to Military Careers\* <sup>M</sup>  
Law & Order\* <sup>M</sup>  
National Security\* <sup>M</sup>  
Principles of Public Service\* <sup>M</sup>

## MANUFACTURING

Manufacturing: Product Design and Innovation\* <sup>M</sup>

## MARKETING

Advertising and Sales Promotion\* <sup>M</sup>  
Marketing 2A\* <sup>M</sup> **new**  
Marketing 2B\* <sup>M</sup> **new**  
Marketing Foundations 1A\* <sup>M</sup> **new**  
Marketing Foundations 1B\* <sup>M</sup> **new**  
Professional Sales and Promotion 1A\* **new**  
Professional Sales and Promotion 1B\* **new**  
Sports & Entertainment Marketing\* <sup>M</sup>

## SCIENCE, TECHNOLOGY, ENGINEERING, AND MATHEMATICS

Astronomy 1A\* <sup>M</sup>  
Astronomy 1B\* <sup>M</sup>  
Concepts of Engineering & Technology\* <sup>M†</sup>  
Forensics Science 1\* <sup>M</sup>  
Forensics Science 2\* <sup>M</sup>  
Great Minds in Science\* <sup>M</sup>  
Marine Science 1A\* <sup>M†</sup>  
Marine Science 1B\* <sup>M†</sup>

# Subscription-based Electives

These electives are priced separately by enrollment.

## Instructional Services Electives Offered with Imagine Edgenuity Teachers Only

All electives can be taught through a district teacher or a highly qualified Imagine Edgenuity instructor. However, the following electives are offered only through Imagine Edgenuity's Instructional Services to help schools further expand their course offerings with Imagine Edgenuity's instructors.

Adaptive PE\*  
Advanced PE 1 & 2  
Anatomy\* <sup>M</sup>  
Comprehensive PE\*  
Concepts in Fitness\*  
Credit Recovery PE 1 & 2  
Drugs & Alcohol\* <sup>M</sup>  
Exercise Science\* <sup>M</sup>  
Family & Consumer Sciences\*  
Family Living & Healthy Relationships\*  
First Aid & Safety\*

Fitness Fundamentals 1 & 2 <sup>M</sup>  
Flexibility Training\* <sup>M</sup>  
Group Sports\*  
Health & Personal Wellness\*  
Health Careers\*  
HOPE 1 & 2  
Individual Sports\* <sup>M</sup>  
Intro to Coaching\* <sup>M</sup>  
Life Skills\*  
Middle School Fitness Basics 1 & 2 <sup>M</sup>  
Middle School Intro to Group Sports 1 & 2

Middle School Health\*  
Middle School Intro to Individual Sports 1 & 2 <sup>M</sup>  
Middle School Life Skills\*  
Personal Health and Fitness\*  
Personal Training\*  
Personal Training Concepts\* <sup>M</sup>  
Physiology\* <sup>M</sup>  
Running\* <sup>M</sup>  
Sports Officiating\* <sup>M</sup>  
Strength Training\* <sup>M</sup>  
Walking Fitness\* <sup>M</sup>


\* One-semester course

\*\* Supplemental modules (can be used alongside other courses)

† These courses are not available via Instructional Services. Other courses are subject to teacher availability.

<sup>H</sup> Also available for honors

<sup>M</sup> MOCAP Provider approved course

 Available in EdgeEX

### Notes

AP<sup>®</sup>, Advanced Placement<sup>®</sup>, SAT<sup>®</sup>, PSAT<sup>®</sup>, and ACCUPLACER<sup>®</sup> are registered trademarks of the College Board.

ACT<sup>®</sup> and ACT WorkKeys<sup>®</sup> are registered trademarks of ACT, Inc.

ASVAB<sup>®</sup> (Armed Services Vocational Aptitude Battery) is a registered trademark of the United States Military Entrance Processing Command.

GED<sup>®</sup> is a registered trademark of the American Council on Education.





imagine  
edgenuity



[imaginelearning.com/imagine-edgenuity](https://imaginelearning.com/imagine-edgenuity)  
877-725-4257 • [solutions@imaginelearning.com](mailto:solutions@imaginelearning.com)