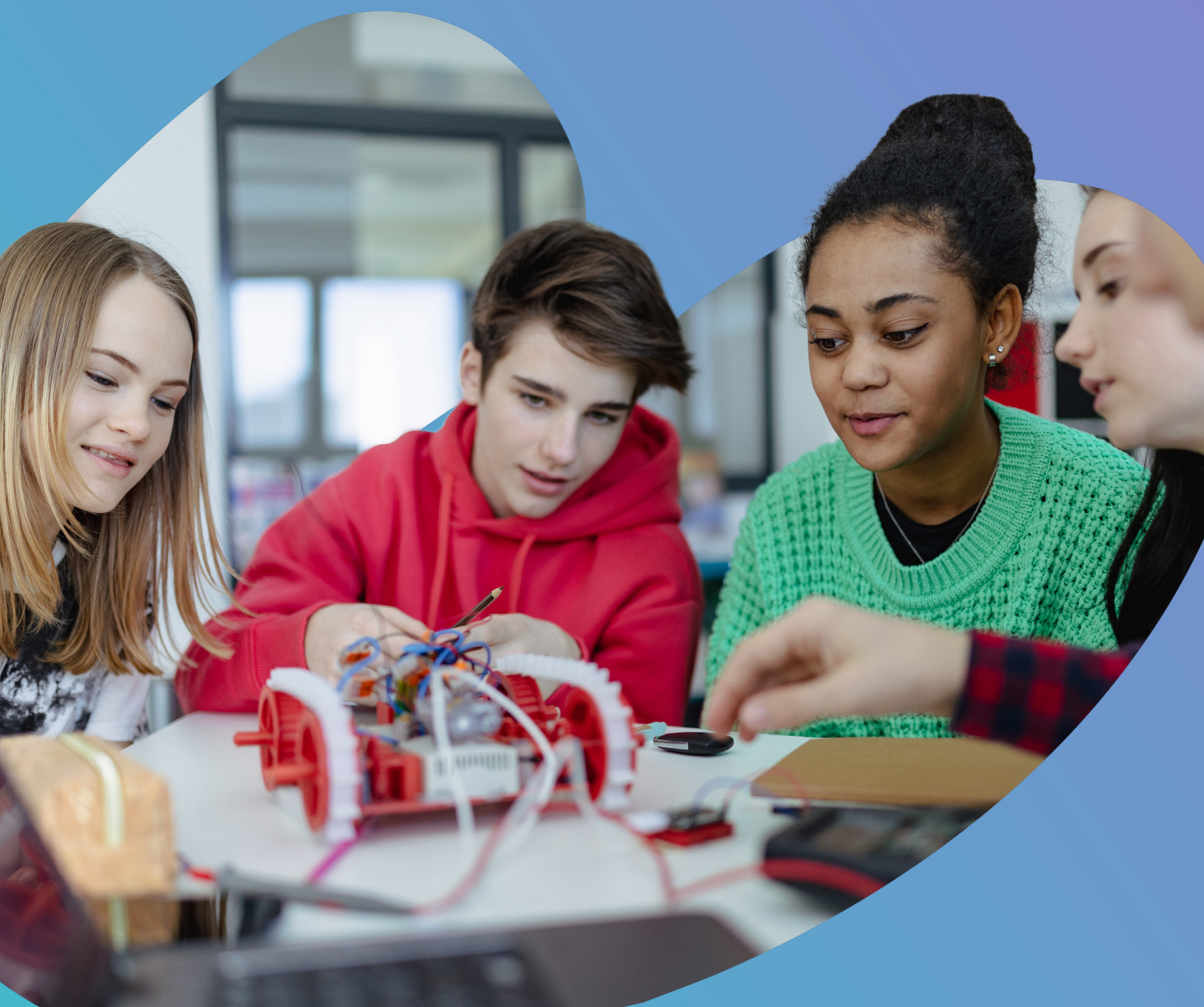




Career & Technical Education

CTE curriculum designed to deepen the connection between academics and career-focused skills



Empower Students for College and Career

Whether high school students plan to attend college or start a fulfilling career after graduation, they need preparation to support their personal and academic goals. Our catalog of highly relevant CTE courses empowers students to explore their interests by engaging with learning experiences across different careers and industries — including multiyear support for high-demand, high-interest careers and job certification exam readiness.



8-10x

less likely

High-risk students enrolled in a CTE program are 8-10x less likely to drop out in grades 11–12.

Source: Association for Career and Technical Education (ACTE)

96%

graduation rate

The graduation rate for CTE concentrators (students who take more than one CTE course in the same field.)

Source: U.S. Department of Education

2.1

million

The healthcare and social assistance sector is projected to add 2.1 million jobs from 2022 to 2032.

Source: U.S. Bureau of Labor Statistics



National Career Pathways promote career exploration

Career and technical education courses through Imagine Edgenuity® enable students to deepen their experience by taking multiple related courses, including courses mapped to National Career Pathways.*

OUR CTE COURSES MAP TO 42 PATHWAYS FOR THESE CAREER CLUSTERS:

- Agriculture, Food, and Natural Resources
- Arts, Audio Visual Tech, and Communication
- Business Management and Administration
- Education and Training
- Finance
- Governance and Public Administration
- Health Science
- Hospitality and Tourism
- Human Services
- Information Technology
- Law, Public Safety, Corrections, and Security
- Manufacturing
- Marketing
- STEM

Visit imaginelearning.click/pathways or scan here to learn more



Prepare students for industry-recognized certification exams and standardized tests

Students who focus their studies and pass an industry-recognized certification exam** can use their completion certificate to demonstrate they have achieved the level of skill and knowledge required for job entry or as part of more comprehensive career or credential preparation.

Specific courses are available for the following tests: ACT®, SAT®, PSAT®, GED®, HISET®, ACCUPLACER®, ACT WORKKEYS®, ASVAB®

*Advance CTE is a national non-profit organization representing state CTE professionals. Advance CTE developed the Career Clusters Framework® which includes commonly referenced Career Clusters and Career Pathways. Clusters include: Agriculture, Food & Natural Resources, Architecture & Construction, Arts, A/V Technology & Communications, Business Management & Administration, Education and Training, Finance, Government & Public Administration, Health Science, Hospitality & Tourism, Human Services, Information Technology, Law, Public Safety, Corrections & Security, Manufacturing, Marketing, Science, Technology, Engineering, and Mathematics (STEM), Transportation, Distribution & Logistics.

**Certification exams are administered and scored by entities such as the National Occupational Competency Testing Institute (NOCTI®). Imagine Learning does not provide certification exams.



Inspire the future

Give students the knowledge, skills, and hands-on experience they need for college and career readiness with highly relevant CTE courses and pathways.



imaginelearning.com/career-technical-education

877-725-4257 • solutions@imaginelearning.com

